

# Calculating the EFC

This lesson is designed to help students calculate their own Expected Family Contribution (EFC) and reflect upon what that means for them and their future.

## OBJECTIVES

Students will:

1. Learn how submitting a FAFSA can help acquire financial aid
2. Use information from their own life to calculate their EFC using the EFC Calculator
3. Evaluate their EFC and brainstorm ways they might cover the remaining costs
4. Create a plan to pay their EFC

## ACTIVITIES

### PART 1

#### Content Knowledge

Ask students if they remember what FAFSA stands for and why the form is so important for financial aid. Discuss students' responses for five minutes and then redefine what the FAFSA stands for and why it's important:

#### FAFSA: Free Application for Federal Student Aid

The FAFSA is required to apply for college financial aid, including Pell Grants, federal loans, and work-student programs. Filing it gives you automatic consideration for federal and state financial aid, and a lot of college financial aid. Colleges use the form to determine the amount of financial aid you are eligible to receive (though some require an additional form, so always check the college's financial aid requirements).

Students will receive a Student Aid Report (SAR) by email after submitting the FAFSA, which provides a summary of the information they reported on the form. Students submit the FAFSA during their senior year of high school and then again each subsequent year of college, except for their last year. Ask students if they have any questions about completing the FAFSA.

Grade Level: 12

#### MEFA PATHWAY SECTIONS WITHIN THIS LESSON:

- EFC Calculator
- My Journal

#### DOMAIN:

- College & Career Exploration

#### TIME:

- 45 minutes

#### MATERIALS NEEDED:

- Internet connection to work with the MEFA Pathway website

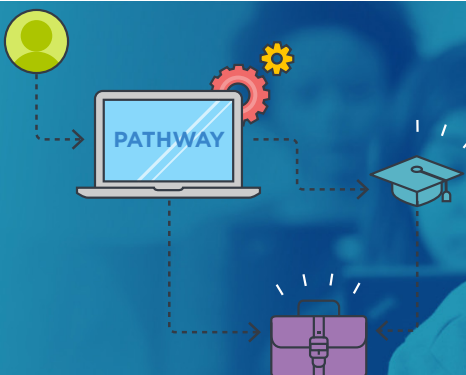
#### FUTURE READY SKILLS:

- Evaluating
- Self-management
- Adaptability

#### VOCABULARY:

- FAFSA
- EFC

Email any questions to:  
[info@mefapathway.org](mailto:info@mefapathway.org)



## PART 2

---

### Applying Information

Have students log in to MEFA Pathway and navigate to the *EFC Calculator* under the *Pay for College* tab. Students should use this calculator to determine their Expected Family Contribution (EFC). Have students reference the handout from the *Learn about Types of Aid and the Expected Family Contribution (EFC)* lesson. Once students have calculated their EFC, instruct students to write this number down. Remind students that the EFC is intended to reflect the amount that the student's family can pay for one year of college, however, often students have to pay more than the EFC to attend a college. It is simply a number used by colleges to determine how much financial aid to offer a student.

## PART 3

---

### Evaluating Information

Using their calculated EFC, students should brainstorm a list of ways to cover their EFC yearly. After using the EFC calculator, have students create an entry in their *My Journal* under the *Create Profile* tab. Ask them to make a plan for how they intend to cover their EFC. The plan could include applying for scholarships, working part time, or receiving money from their parents.

Email any questions to:  
[info@mefapathway.org](mailto:info@mefapathway.org)

# Calculating the EFC Grading Rubric

Email any questions to:  
[info@mefapathway.org](mailto:info@mefapathway.org)

CATEGORY	EXCELLENT 4	GOOD 3	SATISFACTORY 2	NEEDS IMPROVEMENT 1
Sequencing of Information	The information is organized in a clear, logical way.	Most information is organized in a clear, logical way.	Some information is logically sequenced.	There is no clear plan for the organization of information.
Effectiveness	The entry includes all material needed to give a good understanding of the topic.	The entry is lacking one or two key elements.	The entry is missing more than two key elements.	The entry is lacking several key elements and has inaccuracies.
Font Choice & Formatting	Font formats (size, bold, italic) have been carefully planned to enhance readability and content.	Font formats have been carefully planned to enhance readability.	Font formats have been carefully planned to complement the content. It may be a little hard to read.	Font formatting makes it very difficult to read the material.
Conventions. Student uses proper grammar, punctuation, and spelling.	The entry has no misspellings or grammatical errors.	The entry has 1- 2 misspellings, but no grammatical errors.	The entry has 1- 2 grammatical errors but no misspellings.	The entry has more than 2 grammatical and/or spelling errors.