

Finding Satisfying and Rewarding Jobs

This lesson is designed to help students find future career paths based on what they value in the workplace.

OBJECTIVES

Students will...

1. Complete the *What are your Work Values?* assessment
2. Contemplate if they agree with the results of the assessment
3. Search for careers based on the results of the assessment

ACTIVITIES

PART 1

Content Knowledge

Have students log in to MEFA Pathway and head to the *What are your Work Values?* assessment. You can find this under the *Discover Careers/Get to Know Yourself* tab. As students take the assessment, have them ask themselves the following questions as a guide:

- In my ideal job, how important would this be?
- Would I leave my job if this value was not fulfilled?
- Have I experienced this at school or work? How did I react?
- When studying or doing a school project, how do I work best?

Have students follow the directions and complete the assessment. Once they have finished, they can click on *See Results*.

PART 2

Applying Information

Have students review their Work Values assessment results. Do they agree with their top three values? Have students write an entry in *My Journal* found under the *Create Profile* tab reflecting on their top three results and what each represents to them.

Grade Level: 10

MEFA PATHWAY SECTIONS WITHIN THIS LESSON:

- What are your Work Values?
- Career Search
- My Career List
- My Journal

DOMAIN:

- College & Career Exploration

TIME:

- 30 minutes

MATERIALS NEEDED:

- Internet connection to work with the MEFA Pathway website

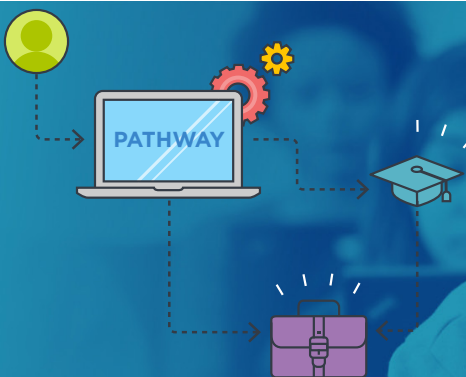
FUTURE READY SKILLS:

- Evaluating
- Growth Mindset
- Emotional Intelligence

VOCABULARY:

- Work Values
- Career Path

Email any questions to:
k12support@mefa.org



LESSON PLAN

Evaluating Information

While still logged in to MEFA Pathway, have students head to *Career Search* under the *Discover Careers* tab to begin searching for possible jobs.

- To search for careers related to the Work Values assessment they just completed, students can click on “USE MY VALUES” on the left.
- Students can apply further criteria such as education level and/or career category to narrow down the career results.
- Students can click a career name to view the job’s full career profile. Have students review several career profiles and for at least two click *Save*. Careers will be saved to *My Careers*.
- Have students write an entry in *My Journal* found under the *About Me* tab reflecting on reasons why they choose to save the careers they did to their list.

Email any questions to:
k12support@mefa.org

Finding Satisfying and Rewarding Jobs Grading Rubric

Email any questions to:
k12support@mefa.org

CATEGORY	EXCELLENT 4	GOOD 3	SATISFACTORY 2	NEEDS IMPROVEMENT 1
Sequencing of Information	The information is organized in a clear, logical way.	Most information is organized in a clear, logical way.	Some information is logically sequenced.	There is no clear plan for the organization of information.
Effectiveness	The entry includes all material needed to give a good understanding of the topic.	The entry is lacking one or two key elements.	The entry is missing more than two key elements.	The entry is lacking several key elements and has inaccuracies.
Font Choice & Formatting	Font formats (size, bold, italic) have been carefully planned to enhance readability and content.	Font formats have been carefully planned to enhance readability.	Font formats have been carefully planned to complement the content. It may be a little hard to read.	Font formatting makes it very difficult to read the material.
Conventions. Student uses proper grammar, punctuation, and spelling.	The entry has no misspellings or grammatical errors.	The entry has 1- 2 misspellings, but no grammatical errors.	The entry has 1- 2 grammatical errors but no misspellings.	The entry has more than 2 grammatical and/or spelling errors.